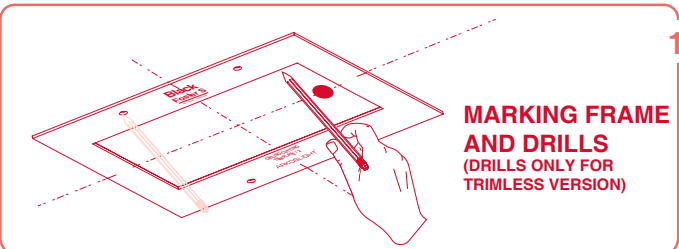
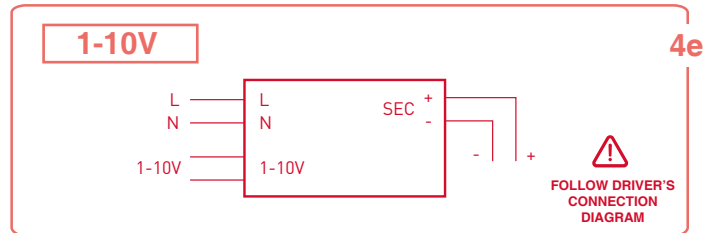
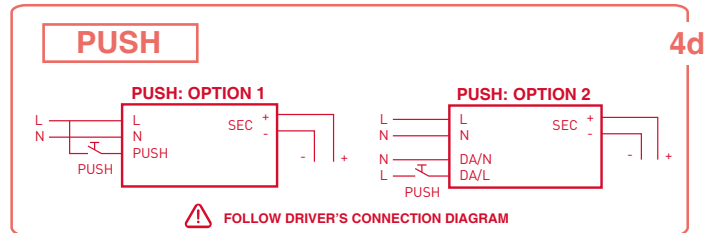
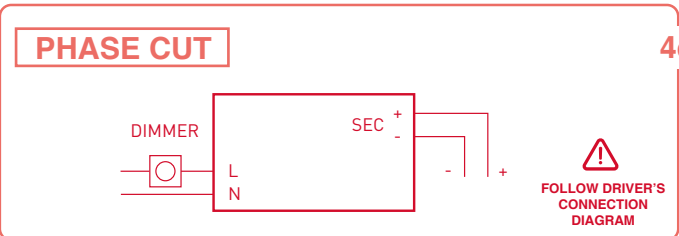
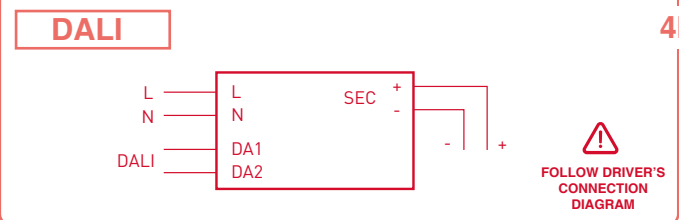
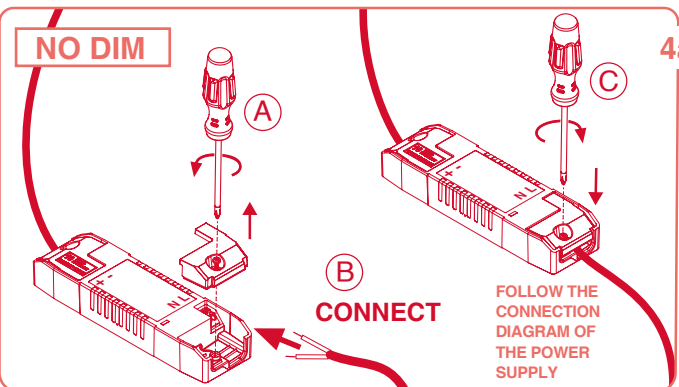
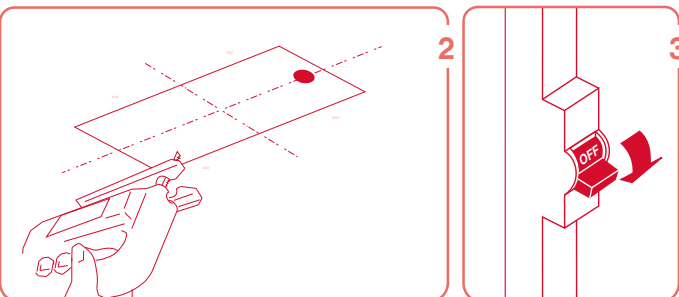


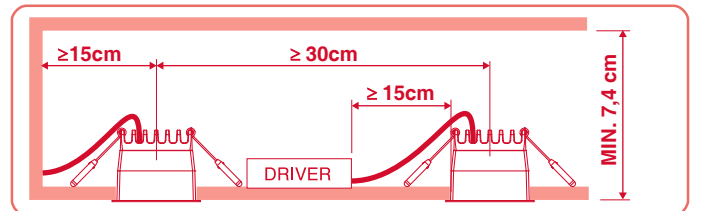
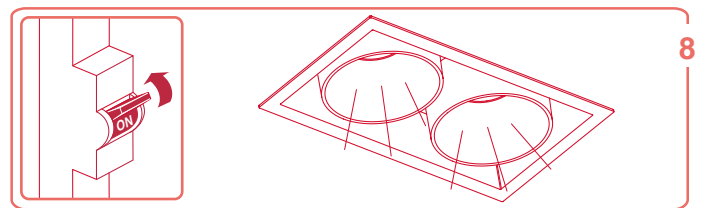
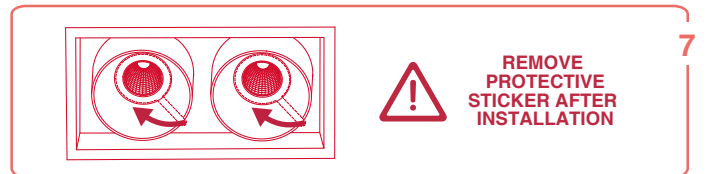
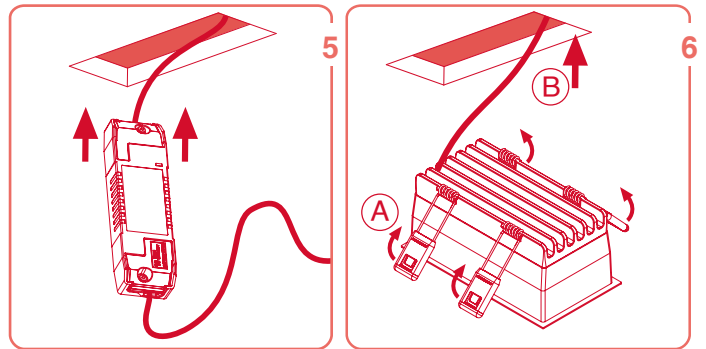
BLACK FOSTER S



MARKING FRAME AND DRILLS (DRILLS ONLY FOR TRIMLESS VERSION)

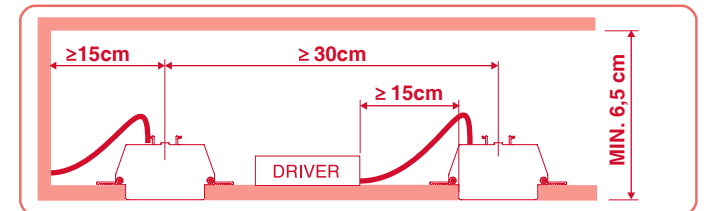
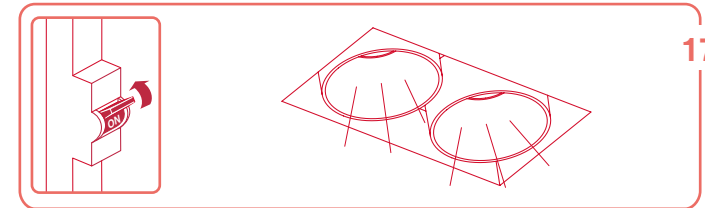
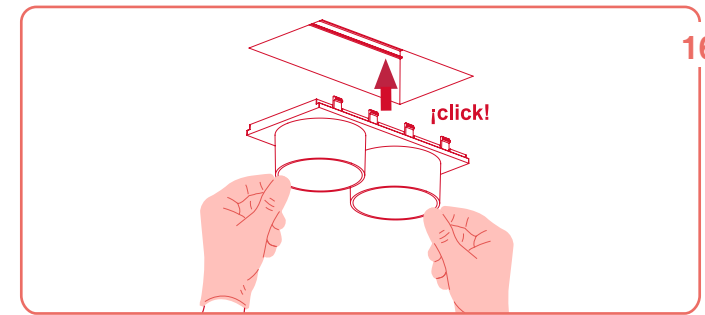
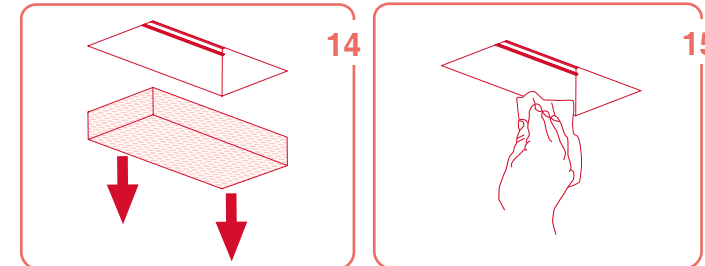
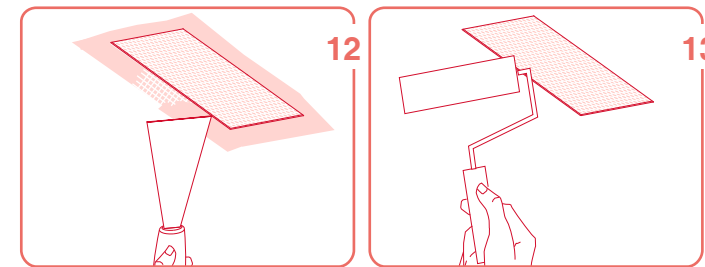
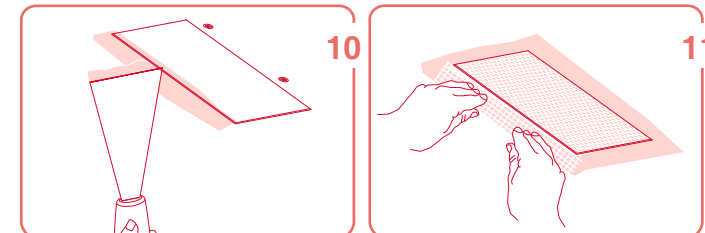
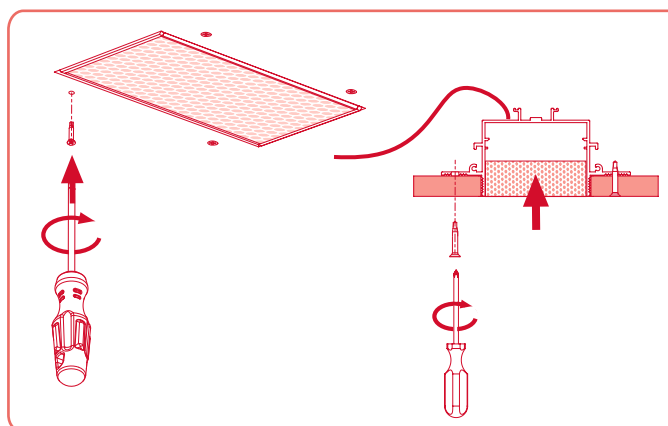
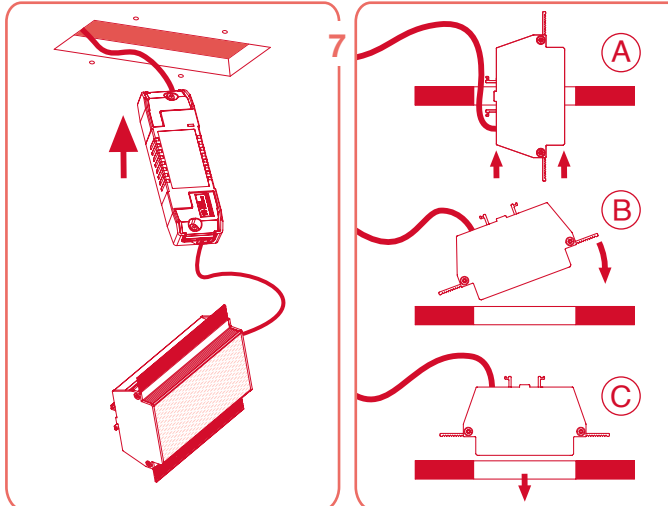
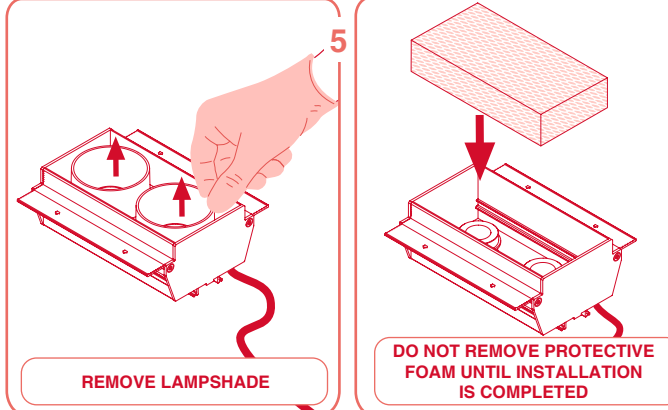


Recessed

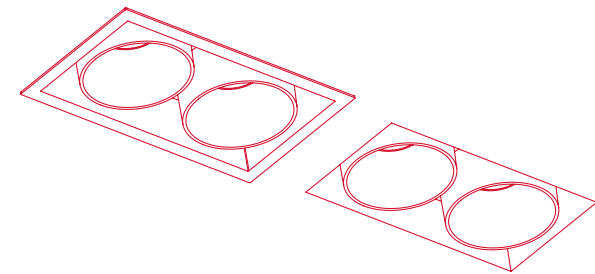


Trimless

For Trimless version:
>PLASTERBOARD CEILING, MANDATORY THICKNESS 12,5mm.
>IT IS RECOMMENDED TO PLACE THE DRIVER REMOTELY IN A REGISTRY FOR FUTURE MAINTENANCE WORK.



ARKOSLIGHT®



Black Foster S

Recessed / Trimless

APTO PARA USO INTERIOR
SUITABLE FOR INDOOR USE
APPROPRIÉ POUR UTILISATION INTÉRIEURE
FÜR INNENGEBRAUCH GEEIGNET
ADATTO PER USO INTERNO
TOEPASBAAR BINNENSHUIS
ΚΑΤΑΛΛΗΛΟ ΓΙΑ ΕΣΤΕΡΙΚΕ ΧΡΗΣΕΙΣ
مناسبة للاستعمال الداخلي

CLASSE II DOBLE AISLAMIENTO
CLASS II DOUBLE INSULATION
CLASSE II DOUBLE ISOLATION
KLASSE II DOPPEL-ISOLIERUNG
CLASSE II DOPPIO ISOLAMENTO
CLASSE II DUBBELE ISOLATIE
ΤΑΞΗ II ΔΙΤΑΗ ΜΟΝΩΣΗ
فئة II مزدوج

NUNCA CUBRIR CON MATERIAL AISLANTE.
NEVER COVER WITH INSULATING MATERIAL.
NE JAMAIS COUVRIR AVEC MATÉRIEL ISOLANT.
NIT MIT ISOLIERENDEM MATERIAL BEDECKEN.
NON COPRIRE CON MATERIALE ISOLANTE.
NOOIT AFDERKEN MET ISOLATIEMATERIAAL.
ΔΕΝ ΤΑ ΚΑΛΥΨΕΤΕ ΠΟΤΕ ΜΕ ΜΟΝΩΤΙΚΑ ΥΛΙΚΑ.
هذه الاثارة مناسبة للتركيب على الأسطح القابلة للإستعمال.
لا تغطي الأثارة بأي مادة عازلة.

ACORDE A LAS NORMAS EN 60.598
IN AGREEMENT TO THE NORM EN 60.598
CONFORME AUX NORMES EN 60.598
GEMÄSS DER NORMEN EN 60.598
CONFORME ALLE NORME EN 60.598
IN OVEREENSTEMMING MET DE NORM EN 60.598
ΣΕ ΣΥΜΦΩΝΙΑ ΜΕ ΤΟΝ ΚΑΝΟΝΑ EN 60.598
بموافقة إنفاق نظام EN 60.598

Esta luminaria ha sido probada para garantizar su correcto funcionamiento.
This fixture has been tested to certify its correct operation.
Ce luminaire a été testé afin de certifier son correct fonctionnement.
Diese Leuchte wurde getestet um die korrekte Funktion zu garantieren.
Questo apparecchio è stato testato per certificare il corretto funzionamento.
Dit armatuur is getest om te verzekeren dat het goed functioneert.
Αυτό το φωτιστικό έχει δοκιμαστεί για να διασφαλιστεί η σωστή λειτουργία.
تم اختبار وحدة الإثارة هذه لضمان التشغيل السليم.

Este producto contiene una fuente luminosa de la clase de eficiencia energética F.
Ce produit contient une source lumineuse de classe d'efficacité énergétique F.
Dit product bevat een lichtbron van energie-efficiëntieklasse F.
This product contains a light source of energy efficiency class F.
Dieses Produkt enthält eine Lichtquelle der Energieeffizienzklasse F.
Questo prodotto contiene una sorgente luminosa di classe di efficienza energetica F.
Το προϊόν αυτό περιέχει φωτεινή πηγή της τάξης ενεργειακής απόδοσης F.
يحتوي هذا المنتج على مصدر إضاءة من فئة كفاءة الطاقة F.